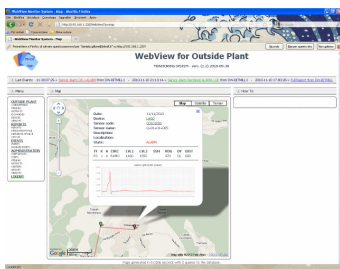


MS-DWARF Monitoring System



Introduction

Designed to monitor dedicated, binary, subscriber, and addressable transducers, MS-DWARF Monitoring system can read a wide range of addressable transducers to provide control over air dryers, air distribution and cables.

MS-DWARF sends reports on the base of :

- Status change
- Thresholds limit
- Scheduled timeouts

Its native communication approach is simple and can be used with any terminal emulation program. Communication with remote surveillance systems can be easily integrated.

MS-DWARF can be programmed either locally via RS232 or from the LAN connection or from modem.

Description

- 16 channels for data acquisition from up to 2032 addressable transducers
- 8 or 16 input contacts (open/close or voltage levels available as option)
- Supports Ethernet, PSTN and Serial communications
- 3 contact output (as option)

Technical Data	
Input channels	• 0 to 200 liters /hour
Input and output contacts	• 10% of full-scale range
RS232 interface	Dsub9 male connector on front panel
Ethernet interface	RJ45 connector Ethernet 10Base-T or 100Base-TX (Auto-Sensing). Supported protocols are TCP/IP, UDP/IP, ARP, ICMP, SNMP, TFTP, Telnet, DHCP, BOOTP, HTTP, and AutoIP
Modem interface	33.6 kbps, V34, V32bis, V32, V22bis, V22A/B, V23, V21, Bell 212 and 103, V42 LAPM, MNP2-4, MNP10, V42bis and MNP5 data compression
Operating Voltage	• -48÷60 VDC
Connections type	IDC on the back panel
Environmental Conditions	
Temperature - Continuous Operation	• 0° to +50° C
Temperature - Transportation and storage	• -40° to +70° C
Relative Humidity	• 0 to 95% non-condensing
Physical Properties	
Size	• 482,6 x 240 x 40 mm (19" rack 1U)
Weight	3 Kg. approx
Connections	• IDC Screw driven on the back panel

Contact Bitmill srl

Email : info@bitmill.it Phone +39 0125 616899

MS-DWARF Monitoring System

Standard configuration features

Programmable features

- Programmable Scan time (in minutes)
- backup e restore of the system configuration either from remote or from local connections.
- callback function for immediate test of the alarm report send functionality.
- software update from remote or local connection
- password levels with user access to function sets depending from the level
- snapshot definition (for all reports types) to have a input status at a pre-defined time of the day.

for all input to MS-DWARF:

- enable / disable
- alarm status
- input description (20 chars)
- input groups for separate logical areas.

Output handling

The user can program up to 32 separate logical conditions as AND/ OR of the product input. Alarm acknowledge providing output reset keeping alarm condition active.

Events notification

Reporting can be programmed on 8 different user groups, depending on programmable timetables. Reports destinations can be varied by the worktime and special days programming.

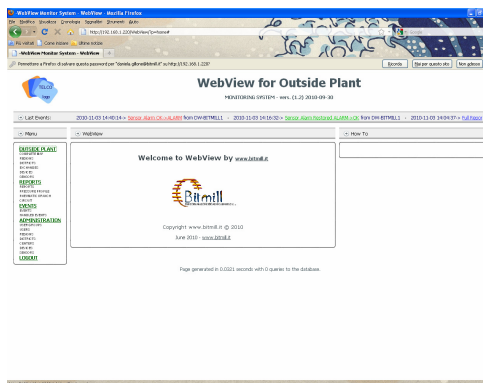
Supported Addressable Transducers

All transducers are based on the same transmitting principle that is a time window from the reset. The frequency output from transducers is in the range of 700 - 2100 Hz and the resolution depends on the model used.

A variety of addressable sensors are available :

- Absolute pressure
- Relative pressure
- High pressure
- Flow
- Humidity
- Temperature
- Contacts / levels
- Voltage levels
- Resistance
- Insulation
- Impedence

...and we are ready to provide new models on request.



Contact Bitmill srl

Email : info@bitmill.it Phone +39 0125 616899